

8627 Lakeside Pkwy
San Antonio, TX 78245
Zoning Site Plan:
Z-2022-1070***

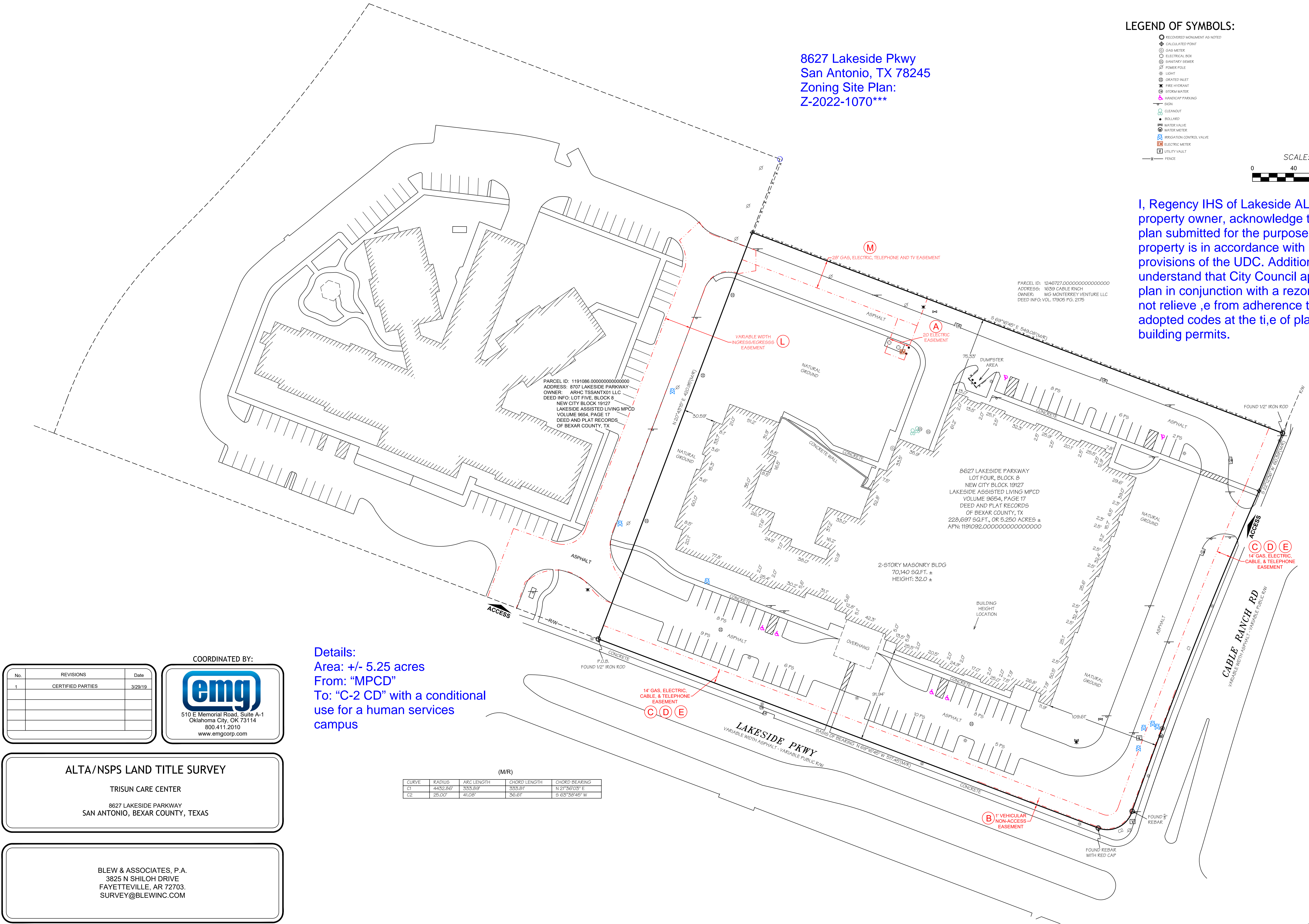
LEGEND OF SYMBOLS:

- RECOVERED MONUMENT AS NOTED
- CALCULATED POINT
- GAS METER
- ELECTRICAL BOX
- SANITARY SEWER
- POWER POLE
- LIGHT
- GRADED INLET
- FIRE HYDRANT
- STORM WATER
- HANDICAP PARKING
- BIGH
- CLEANOUT
- BOLLARD
- WATER VALVE
- IRRIGATION CONTROL VALVE
- ELECTRIC METER
- UTILITY VAULT
- FENCE

SCALE: 1" = 40'



I, Regency IHS of Lakeside AL, LLC, the property owner, acknowledge that this site plan submitted for the purpose of rezoning this property is in accordance with all applicable provisions of the UDC. Additionally, I understand that City Council approval of a site plan in conjunction with a rezoning case does not relieve ,e from adherence to any/all City adopted codes at the ti,e of plan submittal for building permits.



No.	REVISIONS	Date
1	CERTIFIED PARTIES	3/29/19

COORDINATED BY:

emg

510 E Memorial Road, Suite A-1
Oklahoma City, OK 73114
800.411.2010
www.emgcorp.com

Details:
Area: +/- 5.25 acres
From: "MPCD"
To: "C-2 CD" with a conditional
use for a human services
campus

ALTA/NSPS LAND TITLE SURVEY

TRISUN CARE CENTER

8627 LAKESIDE PARKWAY
SAN ANTONIO, BEXAR COUNTY, TEXAS

BLEW & ASSOCIATES, P.A.
3825 N SHILOH DRIVE
FAYETTEVILLE, AR 72703
SURVEY@BLEWINC.COM

(M/R)				
CURVE	RADIUS	ARC LENGTH	CHORD LENGTH	CHORD BEARING
C1	4432.86'	333.59'	333.51'	N 21° 26' 03" E
C2	25.00'	41.08'	36.61'	S 63° 56' 48" W